

# The difference between Pet Health Plan membership and pet insurance

Our Pet Health Plan focuses on preventative healthcare and has been carefully designed to help your pet have a healthy, happy life.

Pet insurance, on the other hand, provides financial cover for unforeseen illness and accidents – although it is important to note that the level of cover provided by different insurers / policies can vary enormously.

Preventative healthcare includes vaccinations, parasite prevention, regular health checks and other services intended to prevent illness or to detect potential issues before your pet suffers any discomfort.

Pet insurance covers unexpected events, similar to a car insurance policy. Unlike car insurance, however, 90% of pet insurance claims are for illness as opposed to accident†. Data also shows you are more likely to claim on your pet insurance than your car or household insurance††.

As a Pet Health Plan member, your pet will be regularly examined by one of our vets or veterinary nurses. This maximises the opportunities for early diagnosis and treatment of conditions which might affect your pet's health and gives the best chance of a positive outcome.

This is why we strongly recommend that responsible pet owners combine Pet Health Plan membership with a pet insurance policy.

† Mintel's Insurance Report 2013 ††  
From Allianz internal data

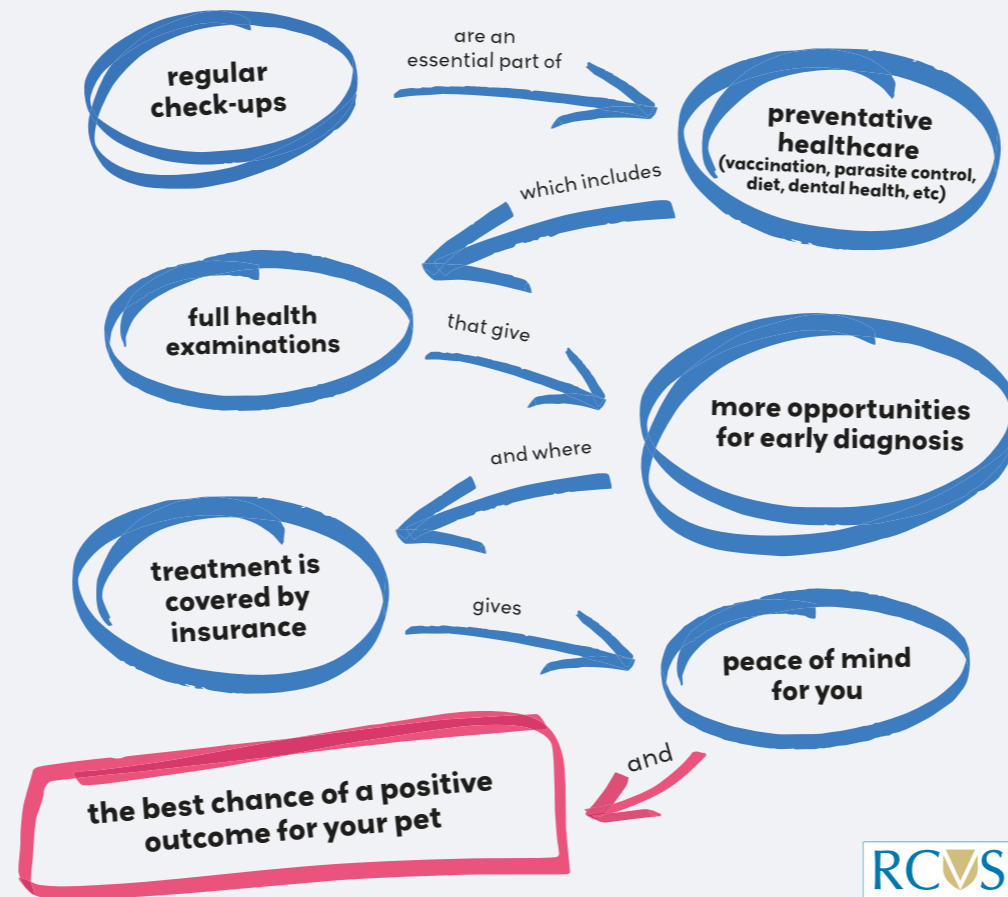
See the differences on our easy to follow chart on the back of this leaflet

**Join online**  
it's quick and easy



Scan the code on your mobile device or visit our website:  
[www.peelvetclinic.co.uk](http://www.peelvetclinic.co.uk)

To help demonstrate the differences, here's what the combination of Pet Health Plan membership and insurance gives you and your pet:



**Hornsea Branch**  
5 Railway Street, Hornsea,  
East Yorkshire, HU18 1PS  
☎ 01964 532 770  
✉ info@peelvetclinic.co.uk

**Beverley Branch**  
North Bar Without, Beverley,  
East Yorkshire, HU17 7AH  
☎ 01482 882 377  
✉ info@peelvetclinic.co.uk

[www.peelvetclinic.co.uk](http://www.peelvetclinic.co.uk)  peelvetclinic

©www.easydirectdebits.co.uk. The Peel Veterinary Clinic Pet Health Plan is administered by www.easydirectdebits.co.uk



# Join our Pet Health Plan

for complete, worry-free preventative healthcare for your cat, dog or rabbit

Pet health plan membership now includes **home delivery** for your pet's parasiticide treatments



[www.peelvetclinic.co.uk](http://www.peelvetclinic.co.uk)  
 peelvetclinic

# Why choose our pet health plan for your pets?

We're **making preventative health care easy and affordable**, we want to help you give your pets the best care possible. We believe that prevention is better than cure. Early diagnosis of health problems will help your pet to live a long and healthy life.

**Our Pet Health Plan is not pet insurance.** It covers the important treatments your pet needs throughout life, such as vaccinations, flea and worm treatments and regular health checks.

Extra benefits of the plan include exclusive discounts on many other products and services at the practice.

## Prevention is better than cure!

Our Pet Health Plan has been set up to enable you to spread the cost of routine preventative health care. This allows us to help you to keep your pet fit and healthy year after year.

We can provide the appropriate vaccines, wormers and flea treatments at the correct time with reduced financial impact to you, the owner. In addition, a thorough clinical examination bi-annually allows us to carefully assess the general health of your pet and offer advice, support and treatment planning, which in many cases can prevent problems arising in the future.

membership includes **kennel cough** for dogs

## Quality care made easy:

Our Pet Health Plans include:

- ✓ Regular checks and maintenance of good general health for your pet
- ✓ Exclusive discounts on selected products & services, including nurse consultations, long term medications, routine dental procedures, annual blood/urine tests, food, toys/accessories and more!
- ✓ Convenient monthly payments for routine services
- ✓ Minimum saving of 20% annually

## Pet Health Plan benefits...

	Dogs	Cats	Rabbits
Annual vaccinations* with a vet including a health check	✓	✓	✓
Annual Kennel Cough vaccination (with booster)	✓		
Year round flea, worm and parasite treatments†	✓	✓	
6 month health check with a nurse	✓	✓	✓
Unlimited 'weigh & worming' + weight check-ups**	✓	✓	✓
Fly strike prevention treatment and worming†			✓
Microchipping for £5	✓	✓	✓
Unlimited nail clipping with a nurse	✓	✓	✓
Annual in-house urine analysis	✓	✓	✓
10% off Rabies vaccination	✓	✓	
10% off any other parasite treatments required	✓	✓	✓
10% off routine neutering	✓	✓	✓
10% off routine dental procedures	✓	✓	✓
10% off reduced price in house blood tests (at time of annual vaccination)	✓	✓	
10% off pre-anaesthetic in house blood tests	✓	✓	
10% off nurse consultations	✓	✓	✓
10% off long term medication (discount begins 4th month of treatment)	✓		✓
10% off all food and accessories bought from the practice	✓	✓	✓

\*Does not include 'weight clinics'

\*pet membership includes the following vaccinations

**Dogs:** Distemper, Hepatitis, Parvovirus, Leptospirosis, Kennel Cough.  
**Cats:** Feline leukaemia virus, herpesvirus & calicivirus (flu), panleukopenia (enteritis).  
**Rabbits:** Myxomatosis, RHD1, RHD2 (annually).

# How much does membership cost?

We've made our plans very **affordable**

**Dogs**  
Monthly Membership Cost

Extra small (up to 4.5kg)  
**£14.70**

Small (4.6 to 10kg)  
**£15.37**

Medium (10.1 to 20kg)  
**£16.67**

Large (20.1 to 40kg)  
**£19.70**

X large (40.1kg to 56kg)  
**£22.77**

XX large (>56kg)  
**£30.86**

**Cats**  
Monthly Membership Cost

All weights  
**£13.70**

**Rabbits**  
Monthly Membership Cost

All weights  
**£9.94**

Home Delivery



\*Parasiticide treatment delivery straight to your door!

Our **VetsDeliver** service is a convenient way for your cat or dog's flea and worm treatment or your rabbit's fly strike and worm treatment to be delivered straight to your door. **Delivered every 3 months for cats and dogs and annually for rabbits.**

## How do I join?

Joining is easy – just ask at reception or call your local branch below.

**Hornsea Branch**  
01964 532 770

**Beverley Branch**  
01482 882 377

## Join online

it's quick and easy.

(Scan the code on your device or visit our website: [www.peelvetclinic.co.uk](http://www.peelvetclinic.co.uk))



Joining takes no more than 2 minutes and you'll have the peace of mind that comes with knowing your pet receives the very best in year-round preventative healthcare.

You'll just need your bank account details, so we can set up your direct debit.

[www.peelvetclinic.co.uk](http://www.peelvetclinic.co.uk)

membership includes **annual vaccinations\*** for cats, dogs and rabbits

Joining is easy...

ask at reception, call your local branch or join online

Fly strike prevention for rabbits